

PodWare is an easy to use PC Windows™ application for setting up, controlling and monitoring a system of professional audio products in a uniform and consistent way. It is both comprehensive and simple to use. A substantial range of OEM features allow your brand and your products to be promoted. PodWare then becomes a valuable sales tool throughout the selling chain. PodWare can control a range of products; it is a true cross-brand *System* controller.

- System control and monitoring
- Quick and easy to use
- Powerful feature set
- Intuitive Grouping feature
- Multiple devices in view
- No design file needed
- OEM customisation

Introduction / Key Features

PodWare is a highly unified control and monitoring PC Windows™ application for a multitude of professional audio device types. It is a solidly engineered platform, ready for the future. PodWare is a true SYTEM controller, able to connect to any Obcom compliant device of any type or from any manufacturer. One click and you are online to a whole

Simple but Feature Rich

We have worked hard to make PodWare as simple and intuitive as possible. This apparent simplicity belies a sophisticated, comprehensive workhorse built on modern Object Oriented technology using a modern language with no 'baggage'. This is a slick, clean, efficient ground-up design of a core technology designed for the future, which is central to the Linea Research philosophy.

Indeed, when networked, PodWare can display information and controls from multiple devices on the same page. And it looks good too!

Uniform familiarity

Even though PodWare may be used with a wide range of professional audio products, it retains the same unified concepts for all of them. Everything is where you expect it to be, and operation is very consistent.

Plug-In Technology

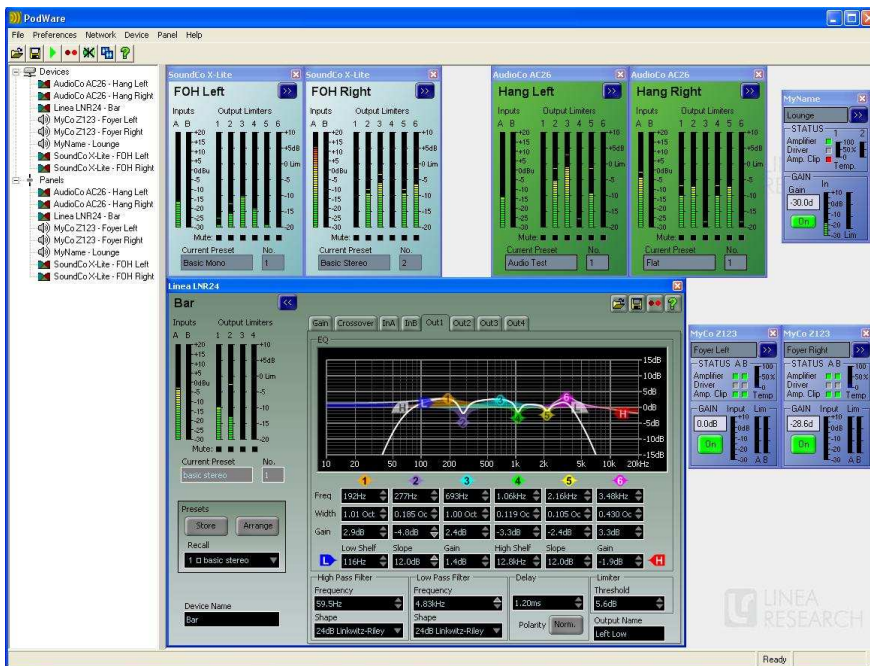
PodWare uses plug-in technology to allow new types of device and their associated control panels to be added without re-installing a new version of the application. All you do is copy the new .dll file to your computer, and that's it! It will immediately be able to control the new device type.

MonIcons

When you want to keep an eye on a large system of devices, you don't want a screen full of clutter, neither do you want to have to keep opening control panels and closing them again. PodWare allows you to display small panels with all the important status indicators on, so you can have many of these MonIcons visible at all times. If you need to make an adjustment, just click the 'More' button to open the full control panel.

Continuous Discovery

PodWare will continuously monitor a network of connected devices, checking that all are still connected, and alerting you to any that "go missing". PodWare will also automatically discover any new device added to the network at any time.



network of devices. One more click and you can monitor all the devices in the network using MonIcons. Click one of these and you can control the device. Plug another device into the network and see it being automatically added to PodWare. Drag an EQ curve with your mouse and you can control the EQ in real time. Adjust a control on the front panel of the device and watch the PodWare panel change smoothly in sympathy. Four more clicks and you have group control of any number of devices. Add to this the meticulously thought-out OEM security and 'skinning' and you have a formidable application aiding the sale of your products.

PodWare will allow you to connect a number of Obcom enabled devices and use it to set them up, control and monitor them. PodWare may be used for programming factory settings or configuring installations as well as live control and monitoring of devices during a performance. PodWare uses the Obcom standard throughout; it speaks Obcom natively with connected devices. These devices may be connected individually using RS232 or USB. When participating in a networked system, PodWare can control and monitor many devices simultaneously via Ethernet or BvNET. PodWare is a precision tool for system control and is capable of being configured to display monitoring indicators, full interactive device panels or whole network views.



Grouping

Our unique approach to device group linking is very intuitive and fast to set up. Just four mouse clicks to collect together the devices you wish to control, and launch a common panel for them all. Up to sixteen groups may be created in this way, each of which may be given a name.

SysTune Integration

Our collaboration with SDA – the EASERA people, has resulted in seamless integration of PodWare with their SysTune measurement software. By using PodWare as a 'plug-in' to SysTune, you can control the EQ of any device from within the SysTune application.

<http://easerasystune.com>

Obcom

An all-new, clean messaging system developed by Linea Research, called Obcom is at the heart of our software. Obcom is used throughout our application software, and across all communications media (such as BvNET). It is a thoroughly uniform standard that allows easy communication between different applications and different devices that support the Obcom standard. Obcom now has a large user base and is supported by many Pro Audio manufacturers.

Because of the flexibility of Obcom, more than one controller may be operating simultaneously, for example a mixture of multiple wall-mounted controllers and PCs. Obcom ensures that all these controllers and the units that they control are always synchronised.

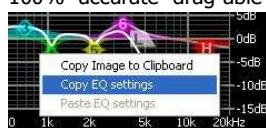
Two-Way Control

We don't think it is acceptable for you to be told not to adjust the controls on the device while it is 'under computer control'. Neither do we think it is right to lock out the front panel of the device, or worse, allow you to adjust the controls on the device without the PC application being aware of it.

That's why Obcom takes care of the synchronisation of parameters between the device and PodWare. The two ends will be in complete agreement at all times. You can freely adjust controls on the device and see the controls move in PodWare *immediately*.

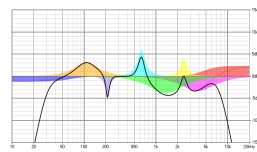
Curve Dragging

PodWare implements smooth, fast and 100% accurate drag-able EQ and other filter curves.



You can adjust the parameters for these either by typing in numerically, spinning up/down controls, or by grabbing the curve with your mouse and dragging it.

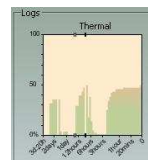
You copy/paste EQ settings between bands of the same device, or even copy/paste them between different devices, of different



types, from different manufacturers! You can also copy the EQ curves to the windows clipboard ready for pasting into a document for publishing.

Logging

Some devices allow certain critical parameters to be logged against time so that potential abuse can later be diagnosed. This data is shown on the PodWare panel graphically, and it may be exported to a spreadsheet for further analysis.



Branding

To promote your brand, PodWare can display your splash-screen at startup, your background image, and show panels in your colour scheme with your logo.

Each device is branded for the OEM customer so that PodWare reports the model name of your choice, with your PodWare panel colour scheme etc.

PodWare provides the means for the OEM to edit parameters which the user cannot edit or even see. Such parameters are password-protected in a very simple, elegant fashion.

Once a complete tuning has been prepared, you can save a special factory file in PodWare which contains all these parameters and all the factory presets (if appropriate). This file can then be used to load settings in production.

Should you wish to change the factory settings in the field, modified Factory files can be distributed and loaded by the user, usually without disturbing the user settings, and without the user being able to access the OEM settings.



Presets

Some devices support the concept of Presets. Presets may be used, for example, to select a loudspeaker system from a library, or to apply one of a number of venue tunings specialised for different types of event. It is simple to create or edit presets within PodWare. The OEM can easily create

a library of locked 'factory' presets from which the user can create their own variants.

Good News for All

With PodWare, your products become faster to install, and abuse can be revealed. More importantly, PodWare can help users to get the best performance out of your product. PodWare promotes your brand, and acts as a valuable sales tool, allowing slick demonstrations right through the selling chain. What's more, PodWare is zero cost – it can be downloaded freely.

Summary of Features

- One click to find your devices
- No device addressing needed
- Continuous Discovery finds new devices
- Controls can be adjusted on device too
- Four-click Group control
- Integration with EASERA SysTune
- Fast metering
- MonIcons reduce the clutter whilst allowing monitoring
- The settings are stored "on the network" - no need for a system file
- Panel positions retained between sessions
- Consistency, familiarity, simplicity (the vast complexity is hidden)
- Drag-able curves
- Copy filter curves to clipboard for publishing
- Copy/paste EQ curves between channels or between devices - even devices of different type and manufacturer
- Mute All (system mute)
- Temperature and protection logging (can copy to a spreadsheet)
- EQ width units – Octaves, Q
- Delay units – ms, feet, metres
- OEM custom styling features
- OEM Parameter locking/hiding features
- Flexible file manipulation allowing partial parameter set updates
- Update device firmware in the field
- Compatibility between manufacturers - a true SYSTEM controller

System Requirements

PodWare is a powerful application capable of running many complex windows concurrently. It therefore requires a computer with reasonable levels of resources. For acceptable performance, the computer must have *at least*:

- PC with >450MHz Pentium processor
- 32-bit Windows™ operating system (NT, 2000, XP, Vista, Win7)
- 128MB RAM
- CD-ROM drive or Internet access
- RS232 or USB port